


# Bridge Week-at-a-Glance

October 31<sup>st</sup> – November 4<sup>th</sup>, 2022



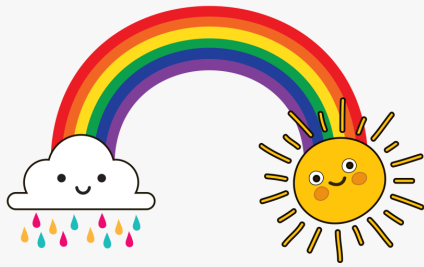
<b>Monday</b> October 31	<b>Halloween Safe and Fun Costume Day!</b> Halloween Costume Parade in the school and dance party in the gym	
<b>Tuesday</b> November 1		
<b>Wednesday</b> November 2		
<b>Thursday</b> November 3	<b>PAC Hot Lunch - pizza (pre-orders only)</b>	
<b>Friday</b> November 4		

Remember to stay home if you are not feeling well so that we can keep everyone healthy!



Feeling sick? **Stay home.**

## Rain or Shine



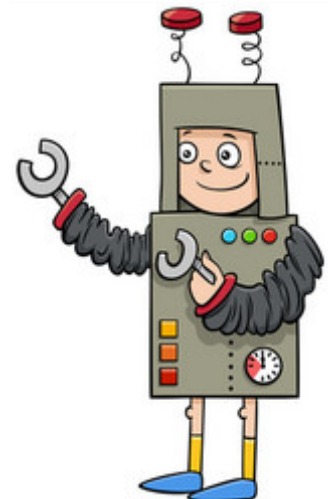
Thank you for sending your children to school ready for the weather!

## “Trick or Treat” Others with Respect

Halloween can be fun. However, we need to be aware that celebrating Halloween needs to be fun for ALL and not at the expense of equity seeking groups. Halloween offers an opportunity to have meaningful conversations about costume choices with colleagues and students and requires consideration. In doing so, it is important to keep in mind that we need to be sensitive to groups that have been marginalized through mimicry and cultural appropriation during Halloween and other ‘dress up’ events. It’s good to keep in mind that the following are **NOT** costumes:

- **RACE** (black face/brown face)
- **CULTURE** (Indigenous regalia/dreadlocks)
- **RELIGIOUS FAITH** (religious figures/gods/saints/gurus/hijab)
- **GENDER** (gender switching for humour or to mock)
- **TRAUMA** (hangman’s noose/weapons)

We are looking forward to seeing your creative, safe and fun costumes at Bridge on **Halloween Day, Monday, October 31<sup>st</sup>.**



## Rocks and Rings



Thank you so much to our PAC for their generous support of our **Rocks and Rings** week at Bridge in November. All students will learn how to curl and more about this sport. Please visit their website for more information at:

<https://rocksandrings.com/>



Richmond School District 38 is excited to welcome kindergarten registration applications for children born in 2018, turning 5 in 2023. These children will begin kindergarten in September 2023. Online registration opens on November 1, 2022.

Please visit our website <http://www.sd38.bc.ca/kindergarten> for more information about our online registration process, required documents, important dates and FAQs.



Thank you to our student announcers for teaching us more about Islamic Heritage this week. And a big thank you to Mme Djaffar and Ms. Lai for creating this beautiful display in our front entrance.



## A collection of quotes from our Staff Display



### Mark your calendars:

Monday, November 7<sup>th</sup>

**Thursday, November 10<sup>th</sup>**

Thursday, November 10<sup>th</sup>

Thursday, November 10<sup>th</sup>

**Friday, November 11<sup>th</sup>**

November 14<sup>th</sup> – 18<sup>th</sup>

Thursday, November 17<sup>th</sup>

Thursday, November 24<sup>th</sup>

Thursday, November 24<sup>th</sup>

**Friday, November 25<sup>th</sup>**

Monday, November 28<sup>th</sup>

Tuesday, November 29<sup>th</sup>

**Tuesday, November 29<sup>th</sup>**

Thursday, December 1<sup>st</sup>

Thursday, December 8<sup>th</sup>

Wednesday, December 14<sup>th</sup>

Thursday, December 15<sup>th</sup>

**Friday, December 16<sup>th</sup>**

**Tuesday, January 3<sup>rd</sup>**

Photo Retake Day

**Remembrance Day Assembly @9am**

TCO2 Presentations for Grades 4-7

**PAC Hot Lunch – Opa! (pre-orders only)**

**Remembrance Day – schools closed**

Rocks and Rings – Curling Week at Bridge

**PAC Hot Lunch – A & W (pre-orders only)**

Kindergarten Hearing Screening

**PAC Hot Lunch - pizza (pre-orders only)**

**Pro-D Day**

Evacuation Drill

Grades 6 and 7 Immunizations

**PAC Meeting @7pm via Teams**

**PAC Hot Lunch - pasta (pre-orders only)**

**PAC Hot Lunch - sushi (pre-orders only)**

Save the Date – Winter Concert – details tba

**PAC Hot Lunch - pizza (pre-orders only)**

**Last day of school before the winter break**

**First day back to school**





Some classes had a front row seat to the big digger excavating one of our courtyards today!

