

# Bridge Week-at-a-Glance

September 16<sup>th</sup> – 20<sup>th</sup>, 2024



<b>Monday 16</b>	
<b>Tuesday 17</b>	<b>PAC Meeting @7pm in the school library</b>
<b>Wednesday 18</b>	Safety Drill <b>Meet the Staff Evening - 6-7pm</b>
<b>Thursday 19</b>	<b>Terry Fox Run @10:30am. All families welcome!</b>
<b>Friday 20</b>	<b>Pro-D Day – No School for Students</b>

## Terry Fox Run

Our annual school Terry Fox Run to support cancer research will take place on **Thursday, September 19<sup>th</sup> between recess and lunch.**

Our students and staff will walk, run and roll in our school field and/or at South Arm Park. Our goal this year is to raise \$1000. Donations can be made at the school office (cash) or online at

<https://schools.terryfox.ca/WilliamBridgeElementary>



***Family members are welcome to join us for this annual event!***

## First PAC Meeting of the Year

**Date:** Tuesday, September 17<sup>th</sup>

**Time:** 7:00pm

**Place:** Bridge School Library



Our Parent Advisory Council (PAC) meets eight times a year to work collaboratively with the school on many initiatives. Some of these include: special events for the school, hot lunch days, Freezie Fridays, fundraising for resources and special presentations, and more! There are a variety of ways parents and caregivers can contribute and be a part of the PAC. Some of these be during the school day, some will be in the evening, some will be at special events, and many will be behind the scenes. If you'd like to learn more about the school and our PAC, we welcome you to our first PAC Meeting of the year. **We will have this meeting in-person in our school library.** Please email the PAC at [williambridgepac@gmail.com](mailto:williambridgepac@gmail.com) if you have any questions or concerns about how to attend our first meeting. We are not able to provide childminding at the school for this meeting. We hope to see you there!

## Meet the Teacher and Staff Evening



**Date:** Wednesday, September 18

**Time:** 6:00-7:00pm

We hope you can join us next week to meet your child(ren)'s teacher and other staff at our school. We hope you are able to join us to see your child(ren)'s classroom, the library, the gym, the music room and the office. This is a drop-in event so we hope you are able to pop in for a few moments sometime between 6 and 7pm.

## Recess and Lunch Guidelines

We are so very lucky to have such a large school field at Bridge with two playgrounds, a basketball and hockey/soccer court, baseball/kickball diamond, quiet spaces for sitting, reading and chatting, and more!

We have a few guidelines/rules that we are sharing with students so that everyone has a fun and safe time outside during recess and lunch.

Here are the guidelines for your information:

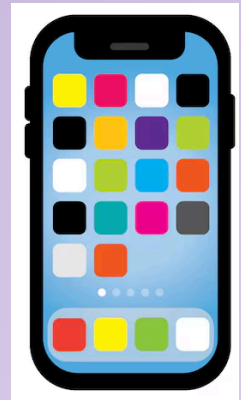
1. The **Primary Playground** is for students in **Kindergarten to Grade 3**.
2. The **Intermediate Playground** is for students in **Grades 3 to 7**.
3. The hockey court, which is mostly used for soccer, is for students in Grades 1-4.
4. Students in Grades 5-7 will be playing soccer in the large field.
5. We do not have referees for our games so if there is a disagreement during a game, students will use "Rock, Paper, Scissors" to decide the outcome and carry on with the game. This will allow more time for playing!



## Student Personal Digital Devices

The Richmond Board of Education passed a motion to update Policy 105: District Code of Conduct effective July 1, 2024. The updated policy will:

- Restrict students' use of personal digital devices at school, including during instructional time or learning related activities, to promote online safety and a focused learning environment, unless use is permitted by supervising staff.
- Support the acceptable use of student personal digital devices for accessibility and accommodation needs, medical and health needs, and to support equity of learning outcomes.



In conjunction with the updates to Policy 105, the district developed Policy 104-G (A): Acceptable Use of Personal Digital Devices. The key components of these administrative guidelines are as follows:

### **Elementary Schools (K-7):**

- Students should not have personal digital devices in their possession during the school day unless permission is granted by the supervising staff for educational purposes. This includes during recess and lunch or while outside on the playground or on school property.
- **It is recommended that students do not bring personal digital devices to school.**

To view the complete policies and guidelines, please visit the district website or use the provided links below:

- [Policy 104-G \(A\): Acceptable Use of Personal Digital Devices](#) ([link](#))
- [Policy 105: District Code of Conduct](#) ([link](#))

## **Student and Family Affordability Fund**

This past spring, the provincial government announced a renewal of one-time funds for the **Student and Family Affordability Fund** ([link](#)). This fund is designed to assist families who require financial assistance with school-related costs in the following areas:

- School and course fees
- School supplies and course materials
- Field trips
- School-related extracurricular opportunities
- Clothing and footwear required for sports and school activities

**Please reach out to Karen Lin (Principal) at [klin@sd38.bc.ca](mailto:klin@sd38.bc.ca) if you are in need of assistance.** As always, all requests will be treated with dignity and your privacy will be respected. We want to work with our families to ensure that our students, your children, have everything they need in order to be successful at school. Please do not hesitate to reach out if we can help.





# SAVE THE DATE!

**Friday, September 27**  
**Monday, September 30**

Tuesday, October 1

**Friday, October 4**

**Monday, October 14**

**Tuesday, October 22**

**Wednesday, October 23**

**Friday, October 25**

**Thursday, October 31**

Monday, November 4

Friday, November 8

**Monday, November 11**

**Monday, November 25**

Wed., November 27

Thursday, December 19

Friday, December 20

December 21 – January 5

Monday, January 6

**Orange Shirt Day at school and assembly**  
**National Day for Truth and Reconciliation**  
**Schools Closed**

Photo Day – Individual and Class Photos

**Candy Bones Fine Arts Assembly**

**Thanksgiving Day – Schools Closed**

**Early Dismissal at 1:45pm for Learning Updates**

**Early Dismissal at 1:45pm for Learning Updates**

**Provincial Pro-D Day – No School for Students**

**Happy Halloween!**

Photo Retakes

Remembrance Day Assembly

**Remembrance Day – Schools Closed**

**Pro-D Day – No School for Students**

Grades 6 and 7 Immunizations

Written Learning Update #1

Last day of school before the winter break

Winter Break

Back to school after the winter break

**DROP OFF ONLY**



**NO PARKING  
PLEASE**

**Please note that our school parking lot is for staff only.**

**Remember to:**

- park in the neighbourhood if you would like to walk your child to their outside classroom door, or
- drop your child off in the drive-thru lane
- stop your car, do not leave it unattended

**Thank you for helping to keep all of our students and staff safe!**