



# Bridge Week-at-a-Glance

*Nov 24-28*

W E L C O M E

**Mon**

24 Evacuation Drill

**Tue**

25

**Wed**

26

**Thur**

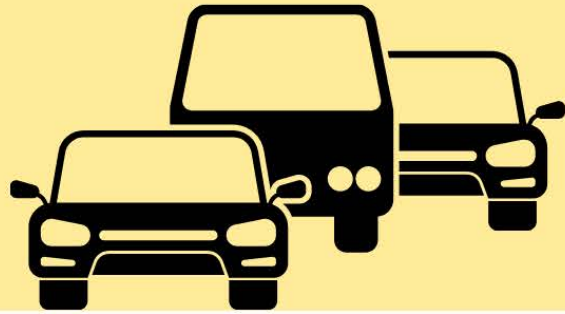
27 Spirit Day- Fan Day  
Will's Jam's

**Fri**

28

## **Traffic Flow**

Our RCMP liaison officer has been supporting our traffic flow at Bridge. He would like to remind everyone to be cautious around the crosswalk and to make sure you have pulled over on the side of the street or in the drop off lane when letting your children out of your vehicle. Taking that extra moment, will keep your children safe.



## **Rain or Shine**

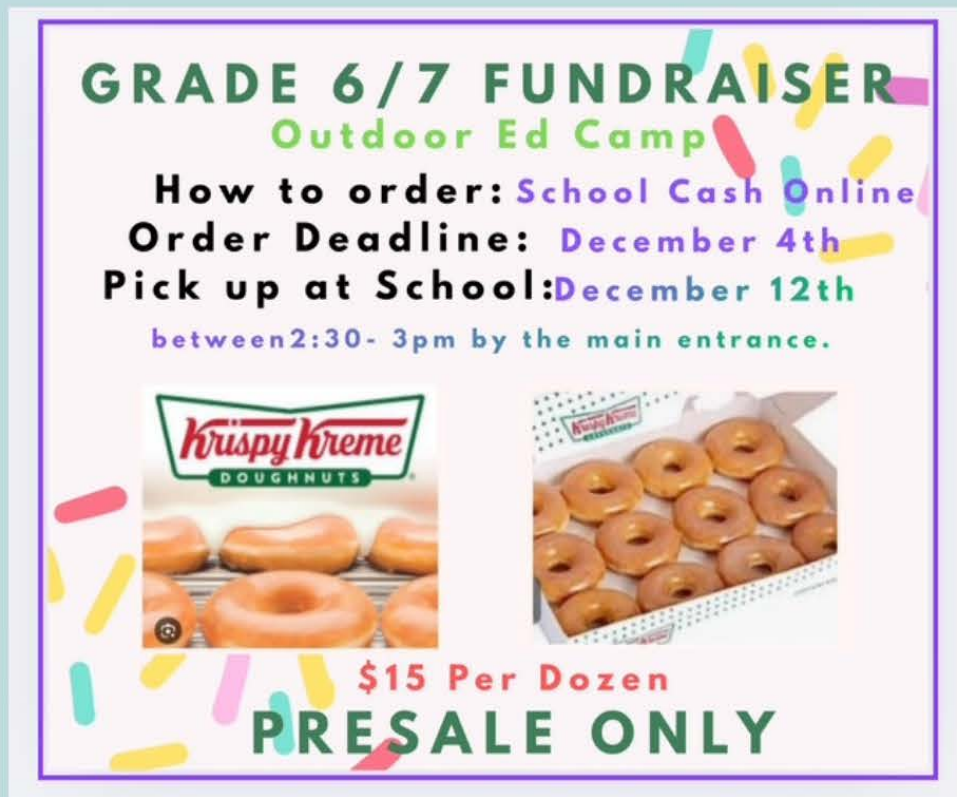
Be prepared for the weather We are reminding families to send their children to school with appropriate clothing for the weather. We go out rain or shine! We recommend students come to school with an extra labeled set of clothing. Additionally, students should all have a refillable water bottle.



# Updates from the PAC

Dear Bridge Families and Caregivers,

The first fundraiser for the Grade 6/7 Outdoor Ed is now open. Please see the attached flyer and place your order for Krispy Kreme doughnuts. Ordering is through school cash online, and closes on December 4th. Doughnut pick up is on December 12th, between 2:30 and 3:00pm by the main entrance.



## Upcoming meeting dates:

- Jan 20
- Feb 17
- April 21
- May 19

# LOST & FOUND

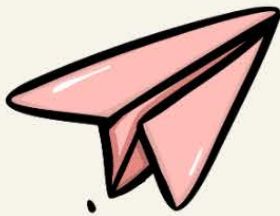


**Please check out our  
Lost and Found.**

**It's overflowing with :**

- Coats
- Sweaters
- Water bottles
- Lunch containers
- Gloves and more





# IMPORTANT DATES TO REMEMBER



## *Dec*

- 1** Pro D Day School Closed
- 3** Kindergarten Hearing Screening
- 4** Immunizations Grades 6&7
- 18** Learning Update Published in My ED
- 19** Last Day before Winter Break
- 20-Jan 3** School Closed for Winter Break

## *Jan*

- 5** Back to school after winter break
- 26** Pro D day - School Closed

